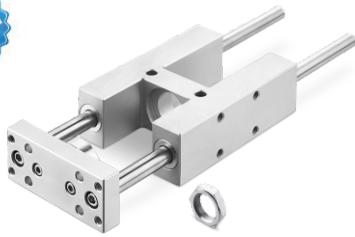
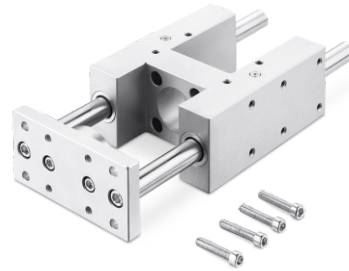


XEN/XENG Series Guide Units



XEN 25-100-GF



XENG 40-100-GF

Ordering Code

XENG

Series Code

XEN: Guided Unit for ISO 6432
XENG: Guided Unit for ISO 15552

50

Bore

XEN: 8mm~25mm
XENG: 32mm~100mm

100

Stroke

GF

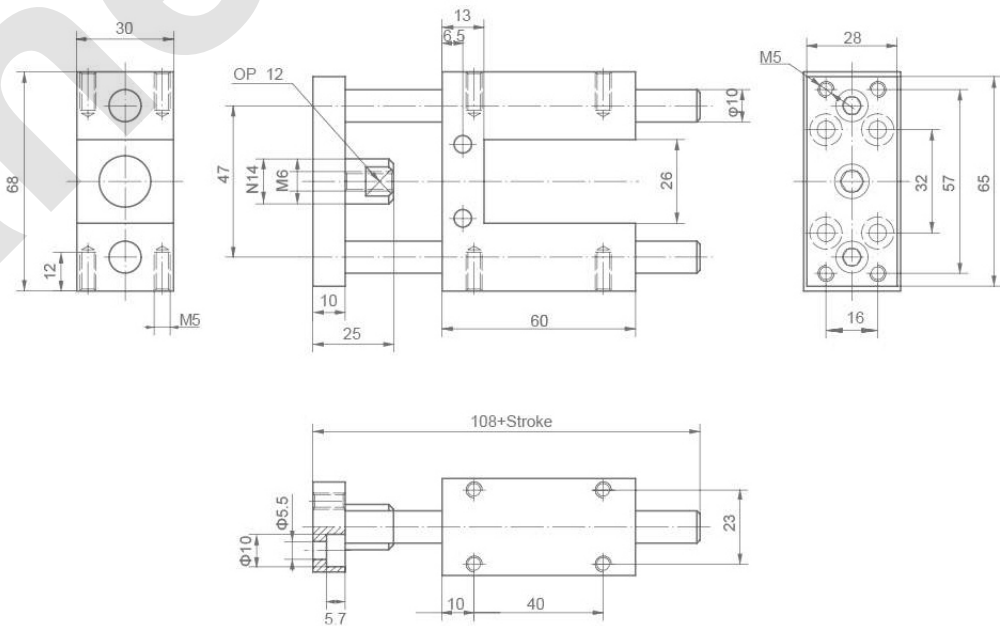
Guide

GF: Plain-bearing Guide
KF: Recirculating Ball
Bearing Guide

Specification

Model	XEN-...				XENG-...					
Bore Φ	8/10	12/16	20	25	32	40	50	63	80	100
Stroke(mm)	1 ... 100		1 ... 200		1 ... 250			1 ... 500		
Guide	Plain-bearing Guide									
Installation	Recirculating Ball									
Installation position	Any									
Operating Range Temperature	-20~+80°C									

Overall Dimensions



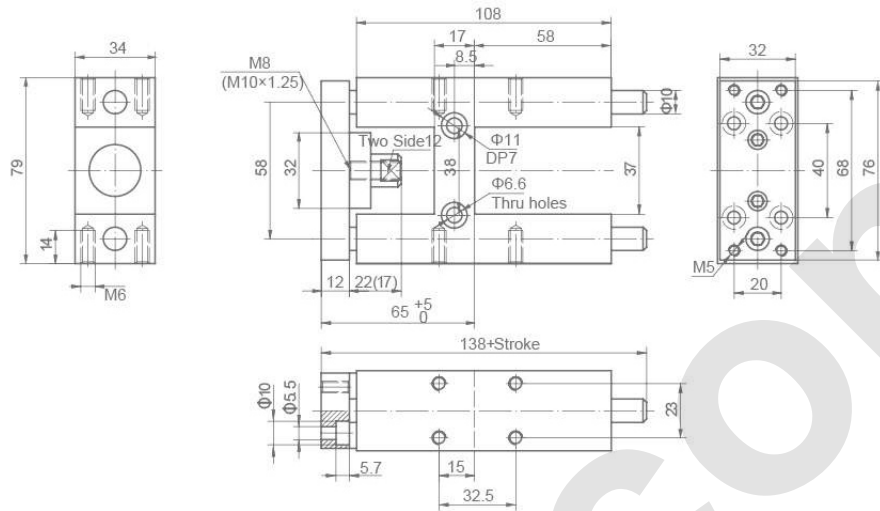
XEN12~16

XEN/XENG Series Guide Units

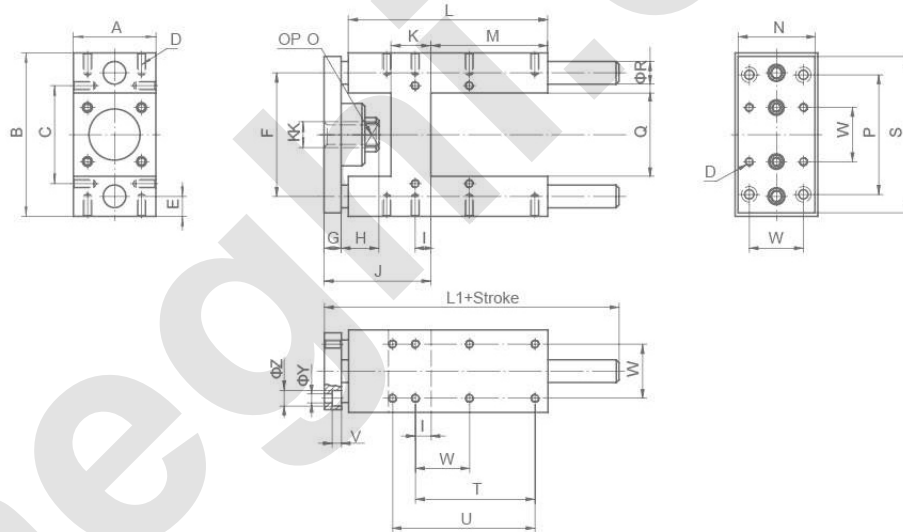
Overall Dimensions

XEN20-25

*In()
is the size of 25



XENG32-100



Dimension Sheet

Bore(mm)	J	Q	W	P	S	T	U	ΦZ	ΦY	V	L1	O	D	E
32	67 ^{+0.5} ₀	50.5 ^{+0.3}	32.5 ^{+0.2}	78 ^{+0.2}	90	70.3 ^{+0.2}	78 ^{+0.2}	11	6.6	6.5	155	14	M6	12
40	75 ^{+0.5} ₀	58.5 ^{+0.3}	38 ^{+0.2}	16 ^{+0.2}	110	84 ^{+0.2}	-	11	6.6	6.5	170	17	M6	14
50	89 ^{+1.0} ₀	70.5 ^{+0.3}	46.5 ^{+0.2}	20 ^{+0.2}	130	81.8 ^{+0.2}	100 ^{+0.2}	13	9	9	188	22	M8	16
63	89 ^{+1.0} ₀	85.5 ^{+0.3}	56.5 ^{+0.2}	20 ^{+0.2}	145	105 ^{+0.2}	-	13	9	9	220	22	M8	16
80	111 ^{+1.0} ₀	106 ^{+0.6}	72 ^{+0.2}	25 ^{+0.2}	180	-	-	18	11	11	258	27	M10	20
100	111 ^{+1.0} ₀	131 ^{+0.6}	89 ^{+0.2}	25 ^{+0.2}	200	-	-	18	11	11	263	27	M10	20

Bore(mm)	A	B	C	ΦR	F	KK	L	K	M	G	H	I	N
32	50 ^{-0.3}	97 ^{-0.4} ₀	61 ^{+0.2}	12	74 ^{+0.2}	M10×1.25	125	24	76	12	20	4.3	45
40	58 ^{-0.3}	115 ^{-0.4} ₀	69 ^{+0.2}	16	87 ^{+0.2}	M12×1.25	140	28	81	12	22	11	54
50	70 ^{-0.3}	137 ^{-0.5} ₀	85 ^{+0.2}	20	104 ^{+0.2}	M16×1.5	150	34	79	15	25	18.8	63
63	85 ^{-0.3}	152 ^{-0.1} ₀	100 ^{+0.2}	20	119 ^{+0.2}	M16×1.5	182	34	111	15	25	15.3	80
80	105 ^{-0.3}	189 ^{-0.5} ₀	130 ^{+0.2}	25	147.5 ^{+0.2}	M20×1.5	215	40	128	20	32	21	100
100	130 ^{-0.3}	213 ^{-0.5} ₀	150 ^{+0.2}	25	172 ^{+0.2}	M20×1.5	220	40	128	20	32	24.5	120